

KAMAMI

KAmoD DCDC AP63200



Rev. 20260404123913

Źródło: https://wiki.kamamilabs.com/index.php?title=KAmoD_DCDC_AP63200

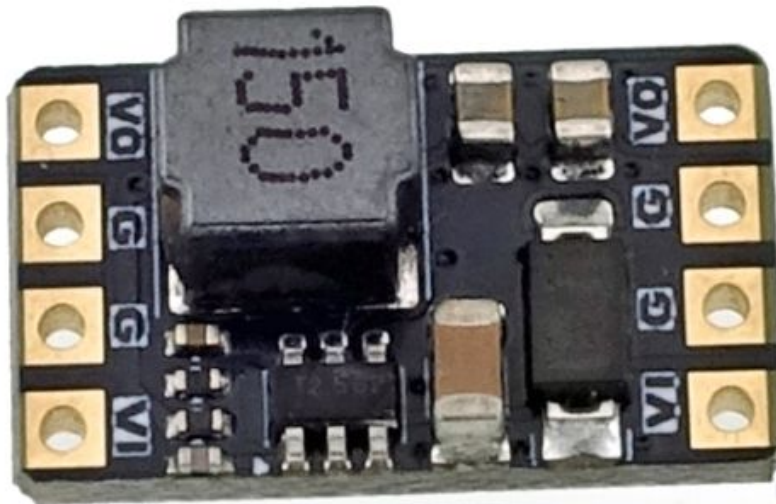
Table of contents

Basic Parameters	1
Standard Equipment	2
Connection Diagram	3
Output Voltage	4
Dimensions	5
Links	6

Description

KAmoD DCDC AP63200 - Miniature switching voltage regulator based on the AP63200 chip

KAmoD DCDC AP63200 is a compact switching regulator module. With small dimensions of 18x11 mm, it can operate with an input voltage of up to 32 V and an output load of up to 1.5 A. The module is available in several versions with precisely set output voltages. Available variants include: 2.5 V, 3.3 V, 4.2 V, 5 V, 8.4 V, 12 V, and 15 V.



Basic Parameters

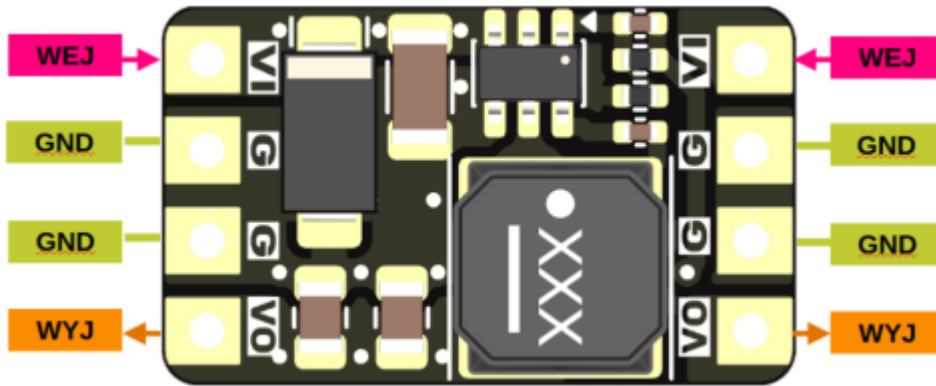
- Input voltage range: 3.5...32 V
- Maximum continuous output current: 1 A
- Maximum peak output current: 1.5 A (duration depends on thermal conditions)
- Available with output voltages: 2.5 V, 3.3 V, 4.2 V, 5 V, 8.4 V, 12 V, or 15 V
- Switching regulator type: AP63200
- DC/DC converter operating frequency: 500 kHz
- Efficiency: approx. 90% at 1 A load
- Protection against overvoltage, overload, and overheating
- Compact dimensions: 18x11 mm
- Input voltage should be at least 1 V higher than the expected output voltage

Standard Equipment

Code	Description
KAmoD DCDC AP63200	• Assembled and tested module

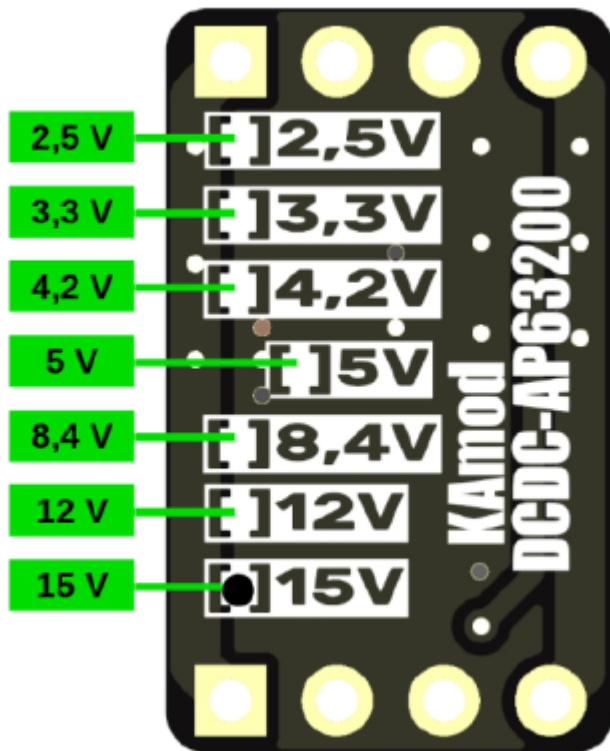
Connection Diagram

There are pads with holes on the edges of the module board, arranged according to a 2.54 mm pitch. Goldpin headers or wires can be soldered to them. The power input (WEJ) and output (WYJ) each have 2 pads located on opposite ends of the board, allowing the module to be optimally fitted to the target application.



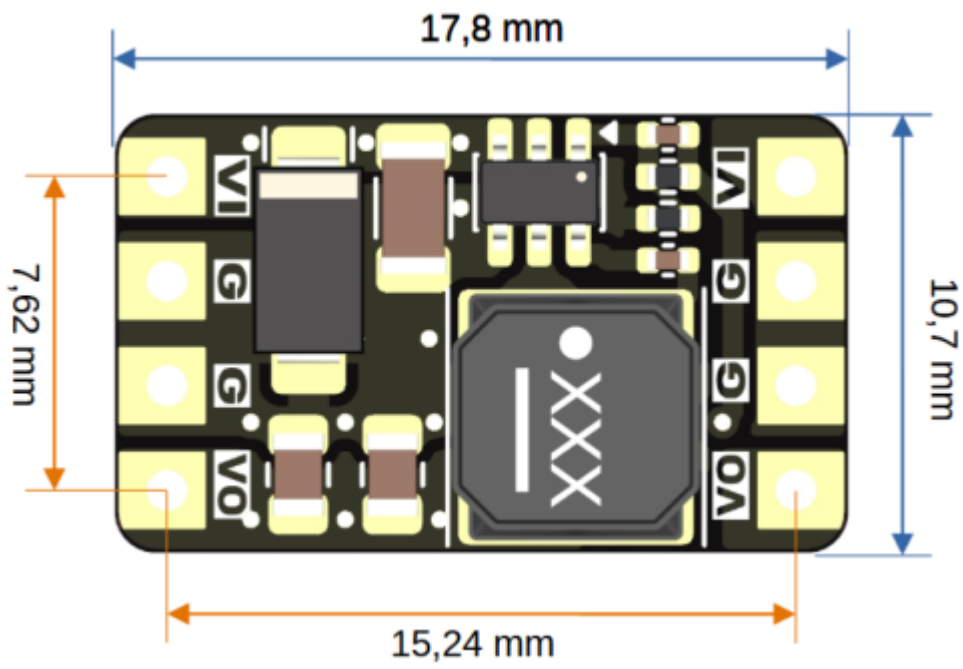
Output Voltage

The KAmoD DCDC AP63200 module is available with a strictly defined output voltage. Variants include: 2.5 V, 3.3 V, 4.2 V, 5 V, 8.4 V, 12 V, or 15 V. The version designation is located on the bottom of the PCB. A marker is placed next to the corresponding voltage—for example, for a 15 V module, the marker will appear as shown in the figure:



Dimensions

The exact dimensions of the module are 17.8x10.7 mm. There are pads with holes on the edges of the module board, arranged according to a 2.54 mm pitch.



Links

- [AP63200 Datasheet](#)
- [CAD Model \(STEP\)](#)



Zastrzegamy prawo do wprowadzania zmian bez uprzedzenia.

Oferowane przez nas płytki drukowane mogą się różnić od prezentowanej w dokumentacji, przy czym zmianom nie ulegają jej właściwości użytkowe.

BTC Korporacja gwarantuje zgodność produktu ze specyfikacją.

BTC Korporacja nie ponosi odpowiedzialności za jakiegokolwiek szkody powstałe bezpośrednio lub pośrednio w wyniku użycia lub nieprawidłowego działania produktu.

BTC Korporacja zastrzega sobie prawo do modyfikacji niniejszej dokumentacji bez uprzedzenia.